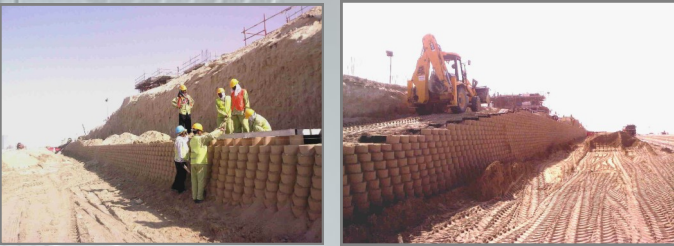


# GEOWEB®

RETAINING WALLS INTEGRATE WITH DESERT LANDSCAPE  
Jumeirah Golf Estates, Dubai, UAE



## GEOWEB® RETAINING WALLS CONSTRUCTED AT PRESTIGIOUS GOLF COMMUNITY



Constructing the GEOWEB® Retaining Walls

Completed GEOWEB® Retaining Wall System prior to vegetation



### PROJECT SUMMARY

JUMEIRAH GOLF ESTATES in Dubai, United Arab Emirates, contains two Greg Norman signature golf courses and is the home of the European Tour's season ending 'Race to Dubai' Golf Tournament. **GEOWEB®** retaining walls were constructed at the Whispering Pines sector of this prestigious real estate development, and also along the arterial road to the development. A total of 5,000 m<sup>2</sup> 'face area', or 54,000 ft<sup>2</sup>, of GEOWEB walls were required in two locations.

The main wall is 320 meters long (960 feet) rising up to 6.8 meters high (20.4 feet). The walls were constructed at an angle of 70 degrees, to minimize the footprint while maintaining the plot boundaries, and yet still allow the walls to be vegetated later (if required).

Combinations of 3, 4 & 5 cell long GEOWEB wall sections were used. The inner cells were filled and compacted with local sand, and the outer (exposed) cells were filled with sweet soil/sand for vegetation purposes. 60 kN woven polyester Geogrids reinforced the backfill behind the wall.

Call 800-548-3424 or 920-738-1328 for more information.

[www.prestogeo.com](http://www.prestogeo.com)

© 2013 Presto Products Company. All Rights Reserved.  
GEOWEB® is a registered trademark of Presto Geosystems.

PRESTO

